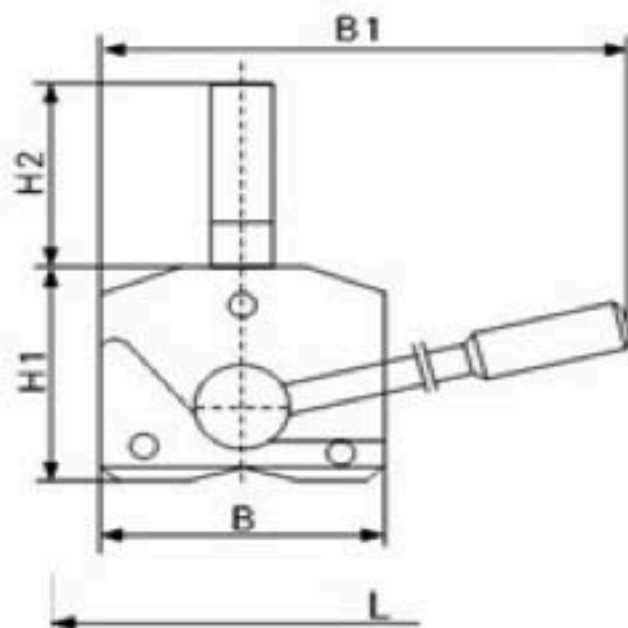
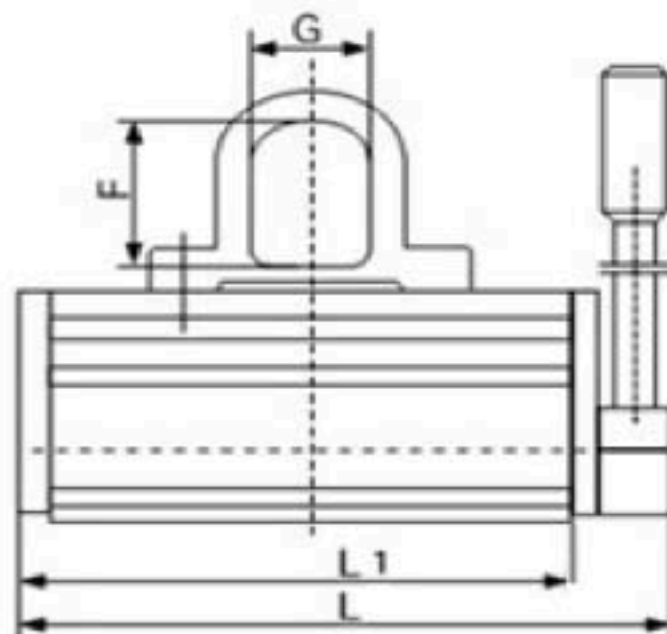


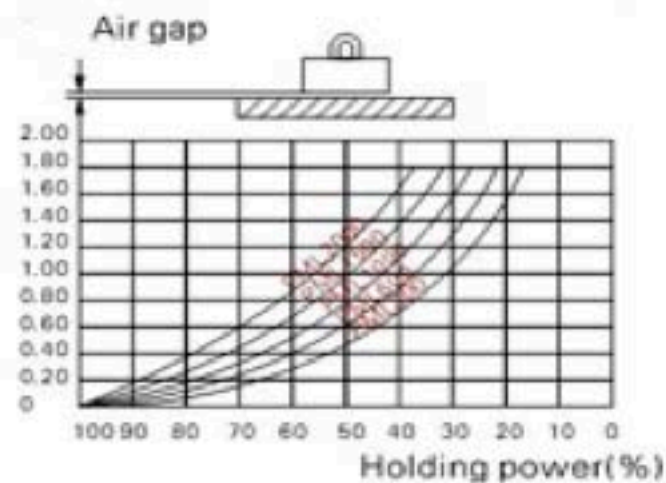
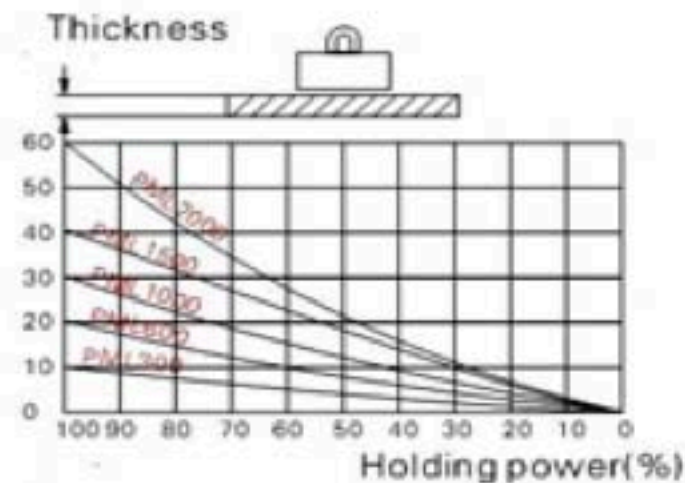
# Tech Specs



Thickness of load and holding power



Air gap and holding power



| Model     | Length | L1     | Width  | H1     | H2     | B1     | F      | G      | Net Weight |
|-----------|--------|--------|--------|--------|--------|--------|--------|--------|------------|
|           | (inch) | (inch) | (inch) | (inch) | (inch) | (inch) | (inch) | (inch) | (lb)       |
| PML-300A  | 7.99   | 6.5    | 3.43   | 3.5    | 2.68   | 8.78   | 1.77   | 1.5    | 22         |
| PML-600A  | 10.47  | 8.9    | 4.41   | 4.29   | 3.5    | 11.3   | 2.28   | 1.77   | 46.2       |
| PML-1000A | 12.99  | 11.42  | 5.83   | 4.92   | 3.74   | 14.33  | 2.36   | 2.05   | 88         |
| PML-1500A | 15.16  | 12.99  | 7.01   | 5.71   | 4.65   | 17.6   | 2.76   | 2.56   | 143        |
| PML-2000A | 18.5   | 16.54  | 7.01   | 5.71   | 4.65   | 19.17  | 2.76   | 2.56   | 182.6      |

|           | Steel plate                           |           |         |                                       | Circular steel products |         |           |  |
|-----------|---------------------------------------|-----------|---------|---------------------------------------|-------------------------|---------|-----------|--|
|           | MaximumHangs the lifting capacity(lb) | Minimum   | Maximum | MaximumHangs the lifting capacity(lb) | Maximum                 | Maximum | Minimum   |  |
|           |                                       | thickness | length  |                                       | diameter                | length  | thickness |  |
|           |                                       | (inch)    | (inch)  |                                       | (inch)                  | (inch)  | (inch)    |  |
| PML-300A  | 660                                   | 0.79      | 59.06   | 330                                   | 11.81                   | 59.06   | 0.47      |  |
| PML-600A  | 1320                                  | 1.18      | 78.74   | 660                                   | 15.75                   | 78.74   | 0.79      |  |
| PML-1000A | 2200                                  | 1.57      | 118.11  | 1100                                  | 17.72                   | 118.11  | 1.1       |  |
| PML-1500A | 3300                                  | 1.97      | 118.11  | 1650                                  | 19.69                   | 118.11  | 1.34      |  |
| PML-2000A | 4400                                  | 2.36      | 118.11  | 2200                                  | 23.62                   | 118.11  | 1.57      |  |